



A smile can conquer the world.

Introducing the Quick bracket range.



www.forestadent.com

 **FORESTADENT**[®]
GERMAN PRECISION IN ORTHODONTICS

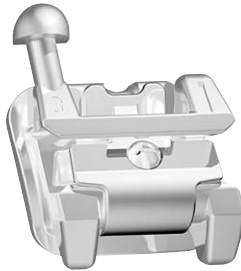
QuickKlear® III



BioQuick®



BioPassive®



Perfection for the perfect appearance.

Developing and optimizing self-ligating brackets for clinical use takes years. We work hard every day to make our brackets even better. This experience gained from the field, current research results and ideas for optimising our products all go into our development work. We carefully weigh up which changes actually bring about advantages. For you and for your patients. Every new generation of brackets raises the bar for the next. And thanks to patent-protected innovations, maximum precision and the renowned quality associated with products "Made in Germany", your patients can enjoy the perfect smile.

To make this possible, we manufacture our SL brackets using a complex injection-moulding process, based on an intelligent, single-piece design. To ensure the perfect fit, we have measured thousands of teeth and adapted our SL brackets specifically to match. We have also continued to perfect our brackets with each new generation, so that you can meet the exact needs of all your patients.

QuickKlear® III brackets.

Fast, discreet and comfortable!

The aesthetic version of the Quick family is called QuickKlear®. Thanks to translucent ceramic, this bracket is very discreet yet extremely effective.

BioQuick®.

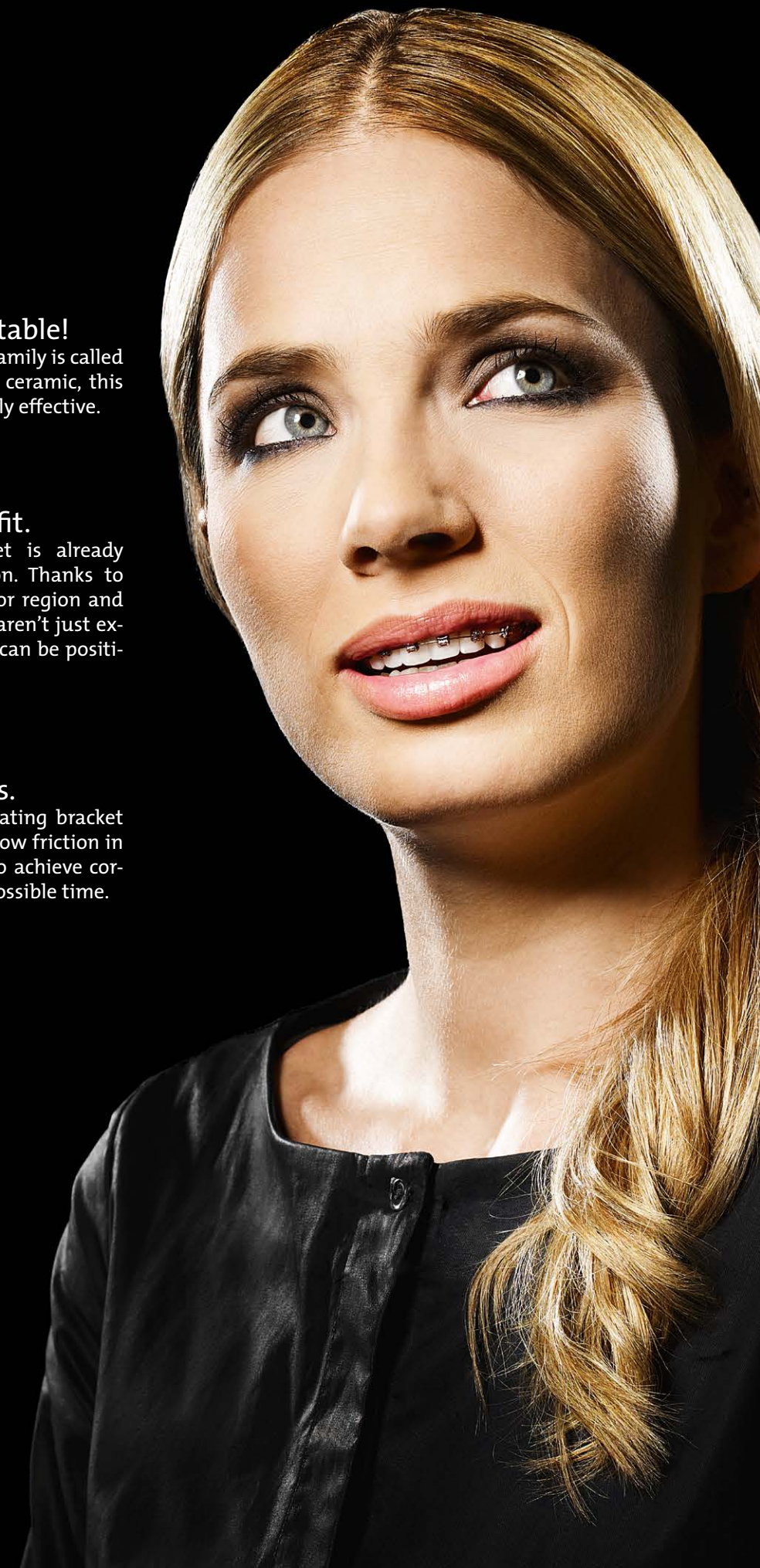
A low profile for an ideal fit.

Our successful BioQuick® bracket is already available in the fourth generation. Thanks to their reduced profile in the anterior region and their optimised base, the brackets aren't just extremely comfortable to wear; they can be positioned comfortably too.

BioPassive® brackets.

Less friction, faster results.

The passive version of our self-ligating bracket is used with controllable forces at low friction in the levelling phase of treatment to achieve correction of the teeth in the fastest possible time.



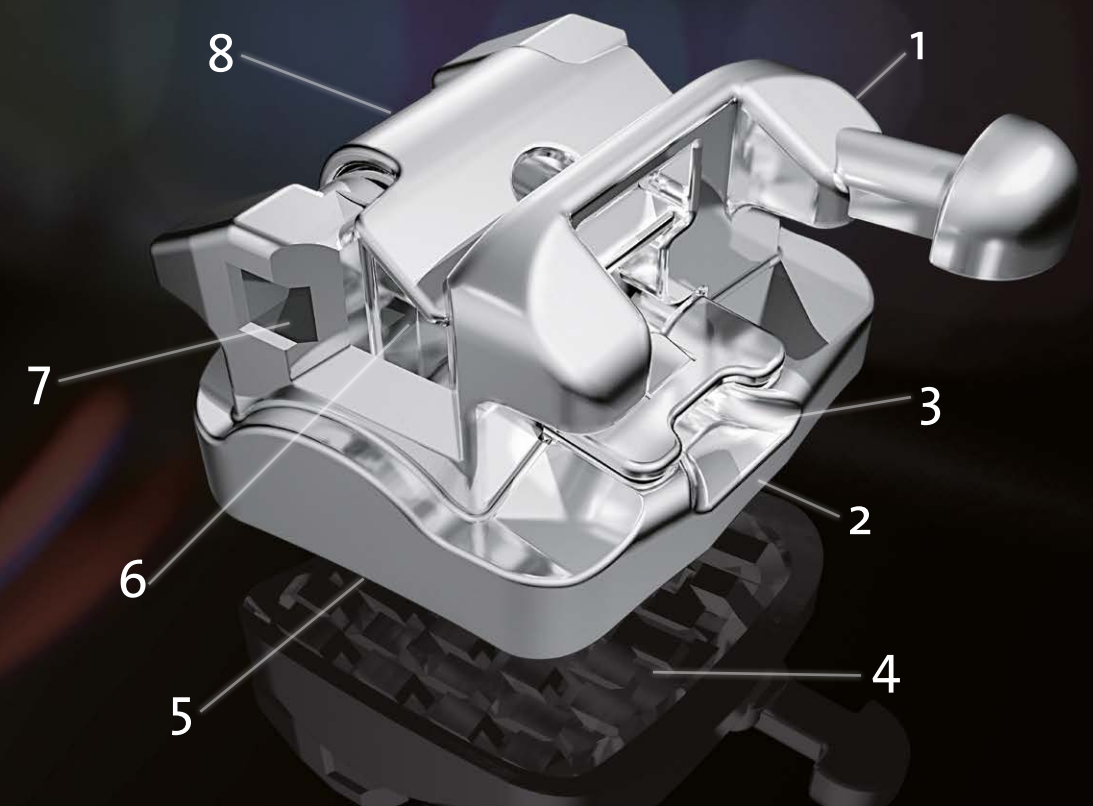
QuicKlear® III



The most attractive advantages at a glance.

1	Body made of translucent ceramic with rounded bracket and slot edges for excellent intraoral comfort
2	Debonding bevels for applying special debonding pliers
3	Catch function for easier gingival opening of the interactive clip
4	The anatomically-adapted inverted hook base ensures perfect mechanical retention and reduces the risk of enamel fractures
5	Dimensions of the body allow chip-free debonding using the debonding tool
6	Four rounded contact ribs in the slot reduce binding and notching effects
7	Wider clip for improved transmission of rotation, angulation and torque

BioQuick®



The most attractive advantages at a glance.

1	Rounded bracket and slot edges for greater intraoral comfort and less friction
2	Surrounding pad edge reduces adhesive overflow
3	Optimised catch function for easier gingival opening of the interactive clip
4	One-piece bracket body: hook-shaped undercuts on the bracket base ensure reliable adhesion
5	Thanks to the redesigned, anatomically-adapted base, positioning is a truly enjoyable task
6	Four rounded contact ribs in the slot reduce binding and notching
7	Thanks to a separate .016" x .016" auxiliary slot, auxiliaries can be easily and simply inserted
8	Strong, wide clip, features a catch function for vestibular opening

The heart of a bracket – the prescription

In order to use the most state-of-the-art bracket technology in a clinically perfect manner, a prescription is required. A treatment concept relying on many years of experience and yet always responsive to advances in clinical practice. That is why the brackets of the Quick family are available for various uses.

	FACE Evolution	FACE Evolution II	McLaughlin/ Bennett/ Trevisi	Roncone	Roth	Trevisi
QuickKlear® III	X		X	X	X	
BioQuick®		X	X	X	X	X
BioPassive®			X		X	

FACE Evolution & FACE Evolution II

In line with Roth’s basic principles, the prescription has been further developed and is now available in a modified bracket prescription developed by the internationally renowned FACE Group. FACE’s treatment philosophy focuses on a functionally and aesthetically ideal treatment outcome. The latest technologies, which enable even more precise diagnostics, treatment planning and therapy are used to achieve this. The latest modification is now available in the form of FACE Evolution II. It is characterised by modified torque values for the brackets for the upper and lower canines and premolars, as well as for the first and second upper molars. They were changed from -7° to 0° in the upper 4s and 5s, and from -17° to -12° (first premolar) and from -22° to -17° (second premolar) in the lower premolars. The foundations of these modifications were obtained by evaluating CBCT images taken before and after treatment. This evaluation suggests changing the torque of some teeth to better position the tooth roots in the alveolar bone and to thus avoid dehiscences and / or to boost stability and periodontal health.

McLaughlin / Bennett / Trevisi

Dr Richard P McLaughlin, Dr John C Bennett and Dr Hugo Trevisi presented their own prescription after gaining around 20 years of clinical experience with the straight wire appliance. They used the Andrews standard values and changed them from a clinical point of view, especially with regard to torques. Their philosophy reflects a highly systematic approach and is based on a comprehensive system of brackets, exact requirements for positioning the brackets on the teeth, various arch shapes and the use of gentle, constant forces.

Roncone

Dr Ronald M Roncone developed his PhysioDynamicSystem (PDS) according to a concept he calls “Simplified Aesthetics”. The concept consists of six steps in total, namely: finding the patient’s correct bite, making a correct diagnosis, using the PDS prescription, accurately placing the brackets, carrying out two to three treatment steps and finishing or retention. Brackets with a .022” slot should ideally be used with regard to the PDS prescription. It is also important to use the friction throughout the treatment, and not just during the finishing stage. Dr Roncone uses active brackets to achieve a highly aesthetic and stable result without using slot-filling techniques. This enables particularly gentle treatment and, as a result, enhanced patient comfort.

Roth

Starting from Lawrence F Andrews’ launch of the straight wire appliance in the 1970s with torque, tip and in / out values programmed in the slot and base, it has been modified time and time again. Dr Ronald H Roth presented the bracket values defined according to his philosophy soon after. The Roth prescription reflects the view that a malocclusion should be corrected in line with an efficient occlusion. Aspects such as facial and dental aesthetics, functional occlusion and mandibular joint position, plus stability and periodontal health, should be included in the diagnosis in this regard.

Trevisi

The name “Trevisi” stands for nobody less than Dr Hugo Trevisi himself – co-creator of the McLaughlin / Bennett / Trevisi treatment philosophy used around the world. In launching the Trevisi prescription, the established expert for self-ligating multi-band appliances is doing more than just presenting his very own bracket technology; he’s also showcasing a new treatment concept. The concept is particularly based on the optimisation of the sliding mechanics and the use of light and constant forces. The arch is allowed to move freely in the bracket slot, which reduces classic friction and enhances the efficiency of the sliding mechanics. What’s more, the Trevisi prescription allows better three-dimensional control of tooth movements.

FORESTADENT (Germany)

Bernhard Förster GmbH
Westliche Karl-Friedrich-Str. 151
75172 Pforzheim

Phone: +49 (0) 7231 459-0
Fax: +49 (0) 7231 459-102
info@forestadent.com
www.forestadent.com



FORESTADENT[®]
GERMAN PRECISION IN ORTHODONTICS